

Saturation

Contents

| | |
|-----------------------|---|
| Assignment..... | 2 |
| Definition | 2 |
| Preparation | 2 |
| High Saturation | 2 |
| Low Saturation | 2 |

Saturation

Assignment

Create two compositions: one should be in low saturation and consist of a narrow value range; the other should be in high saturation and consist of a broad value range.

The composition can be any original idea of design, self-portrait, or copy of a photograph. The color medium utilized should be any paint medium or color-aid paper if constructed of solid shapes.

Recommended size: no larger than 8"x8".

Definition

Saturation defines a range from a pure hue (100%) to gray (0%) at a constant lightness level. A pure color is fully saturated.

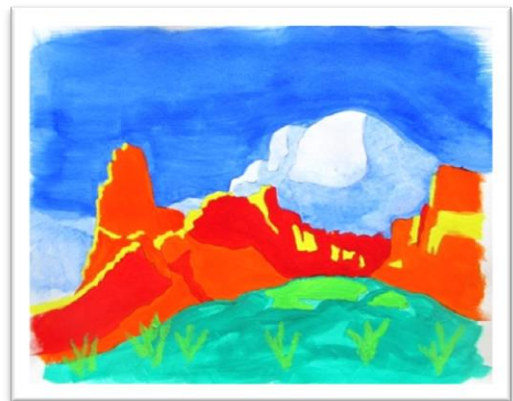
From a perceptual point of view, saturation influences the grade of purity or vividness of a color or image. An unsaturated image is said to be dull, less colorful or washed out but can also give an impression of being softer or less harsh.

Preparation

To begin, two copies of an identical landscape were traced and transferred to Bristol board. The identical images were specifically chosen to compare the visual impacts and differences saturation can produce. Both images were painted with gouache.

High Saturation

I selected Cobalt for the sky background that occupied the upper portion of the composition. Next I painted the grass-covered hill in Permanent Green with patches of Light Green and brush of the same hue. To complement both the sky and the grass, the mountains were painted in Bright Orange and Carmine Red with Lemon Yellow highlights. To complete the work, the clouds were painted in a washed-out version of the same Cobalt and the tints were produced by utilizing a sponge-like application with the wash.



Low Saturation

I used all of the same hues in both images and the same brushes for the same colors and the same techniques for every section; however, in my second version I added a gray to each color that was a mixture of Ivory Black and Bright White.



Saturation

